

COPYRIGHT: This drawing, including the design concepts, is an instrument of service and exclusive property of Studio Senbel, architecture + design and must be returned on request. Reproduction of drawings and related documents, whole or in part, is prohibited without the knowledge and written consent of Studio Senbel, architecture + design.

**Islamic Centre of South Calgary**  
 16555 104 St. S.E.  
 Calgary AB

Studio Senbel, and inc.  
 125 - 1085 East Kent Avenue N.E.  
 Vancouver, B.C. V5X 4V9  
 t: 604.605.6995  
 sws@studiosenbel.com

notes

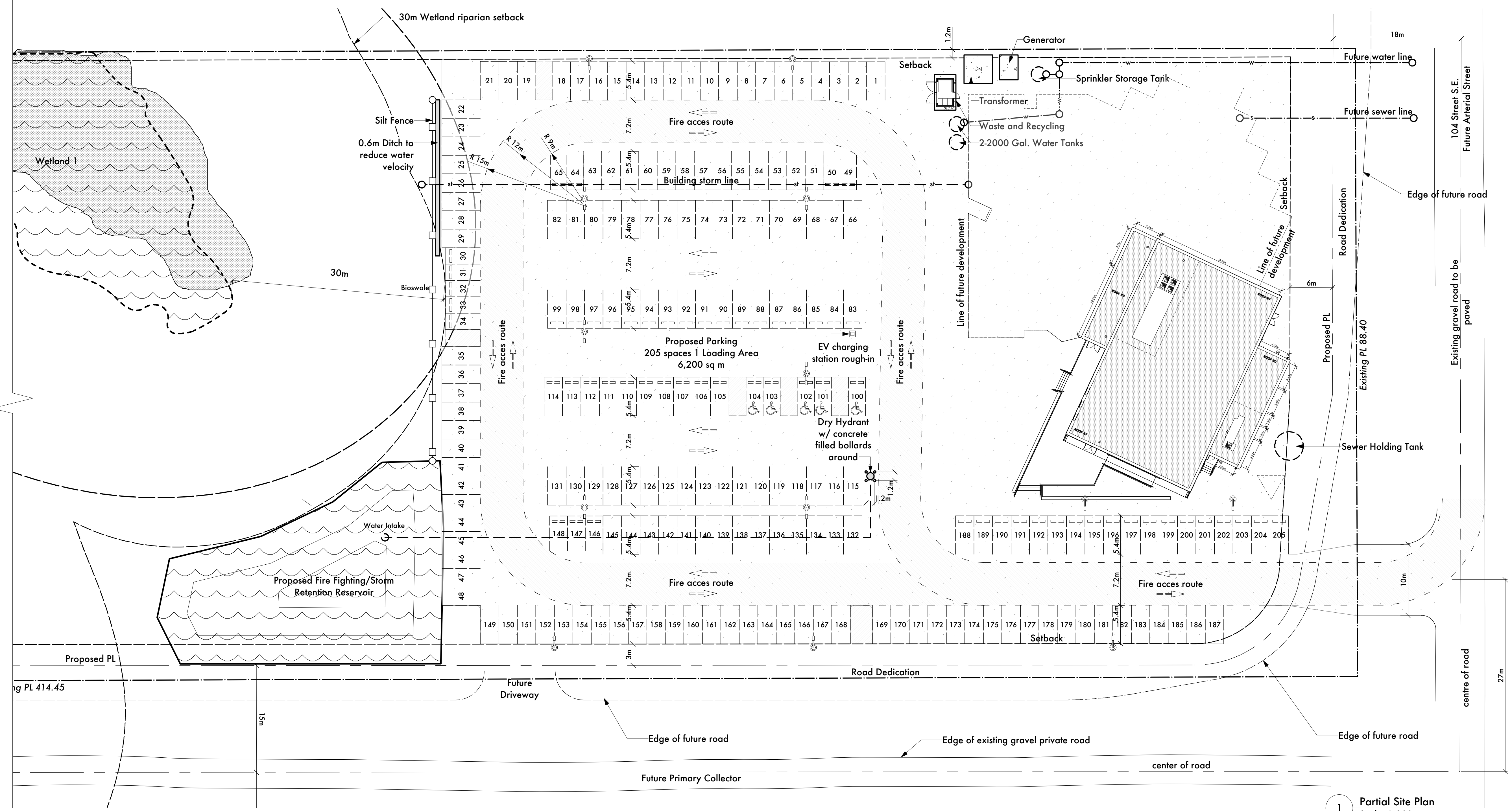
issue

drawing

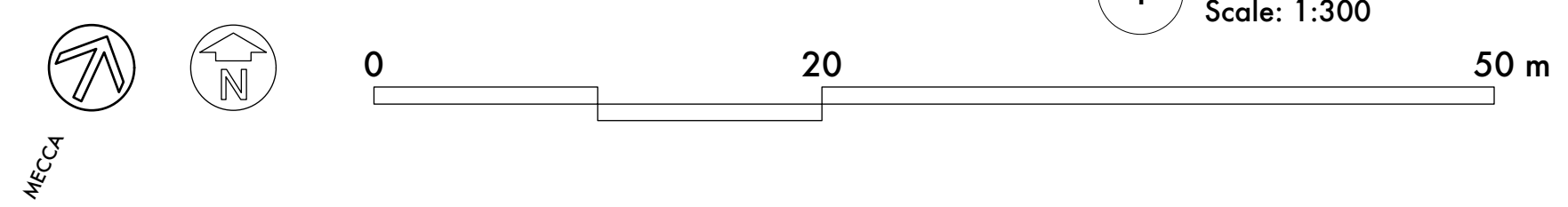
**Phase 1 Site Plan**

page no.

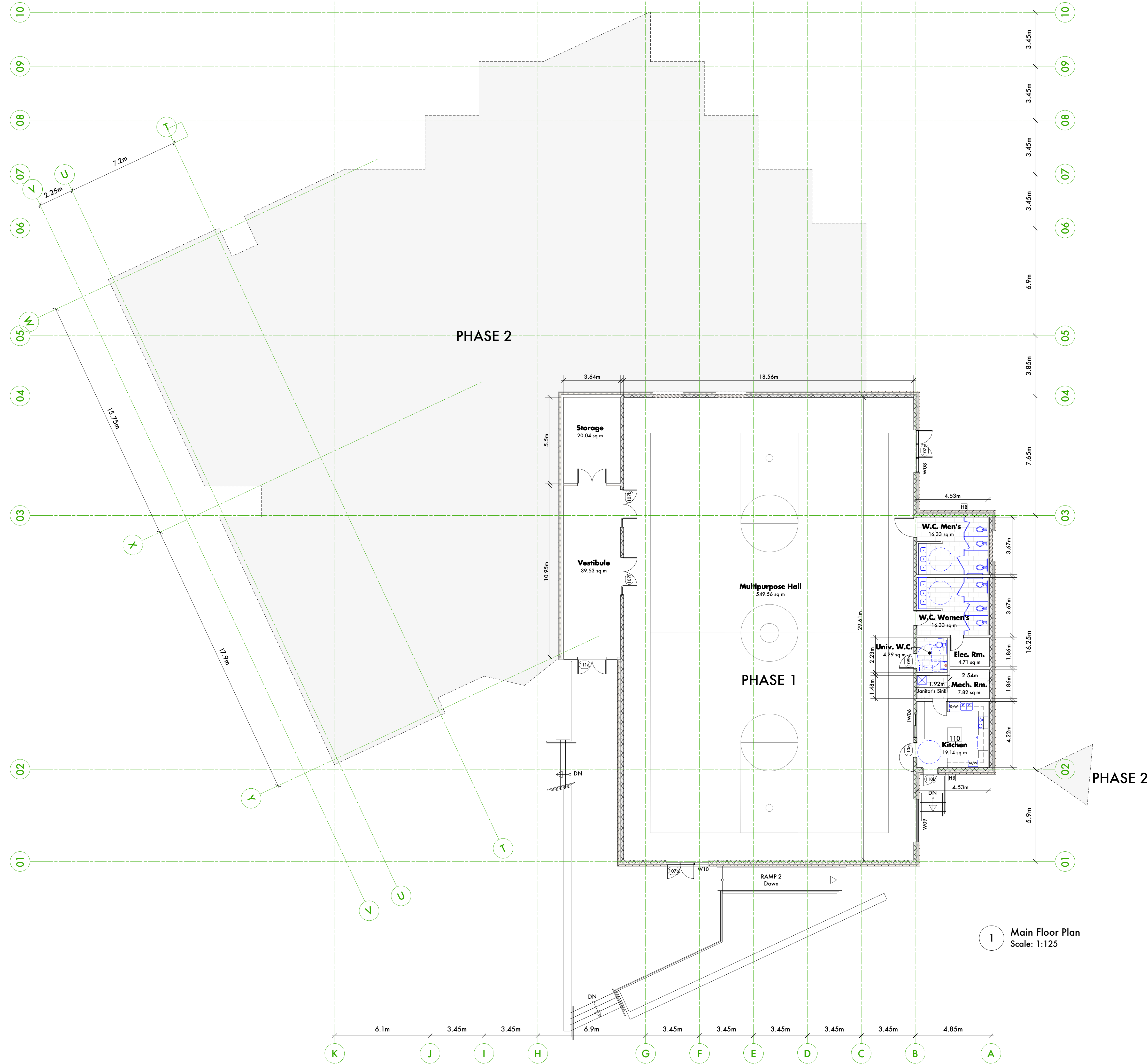
**A-002**



- Legend:**
- Fire access route
  - Site Pole Light Single Head
  - Site Pole Light Double Head
  - Silt Fence
  - Gravel Surface



1 Partial Site Plan  
 Scale: 1:300



1 Main Floor Plan  
Scale: 1:125

COPYRIGHT: This drawing, including the design concepts, is an instrument of service and exclusive property of Studio Senbel, architecture + design and must be returned on request. Reproduction of drawings and related documents, whole or in part, is prohibited without the knowledge and written consent of Studio Senbel, architecture + design.

**Islamic Centre of South Calgary**  
16555 104 St. S.E.  
Calgary AB

Studio Senbel, and inc.  
125 - 1085 East Kent Avenue N.  
Vancouver, B.C. V5X 4V9  
t: 604.605.6995  
sws@studiosenbel.com

notes

issue

drawing  
**Phase 1  
Gym Main  
Floor Plan**

page no.  
**A-202**

